



DRAINAGE & HCAI SUPPORT



REDUCE FLOODING • CLEAR BLOCKAGES • LOWER HCAIs



2018

ABOUT US

Dyteqta helps proactively reduce drainage related plumbing challenges in hospitals across the UK.

Dyteqta Ltd is based on the South Coast of England. Our solutions support hospitals suffering from blockage-related flooding and plumbing challenges including pathogen spread viruses that populate and spread through drain pipes, sewage smell and poorly draining lines.

Did you know that HCAI's populate and move around in drain pipes?

Blocked drain lines provide the perfect breeding ground for bacteria. Stop the spread of infections by keeping your pipes clear. Proactive focus on drainage is key!

We provide surveys, confidential reports and offer solutions to help resolve your plumbing and HCAI drainage related challenges. Call on us to help.

Drainage is often only dealt with in a 'reactive state' when it doesn't function as intended.

With Dyteqta's support, you can change 'REACTIVE' to 'PROACTIVE.'

Contact us today. We can help.

+44 1273 746 229 www.DYTEQTA.com



is dedicated to focusing our proven solutions on **reducing health risks** associated with the spread of spore travelling viruses such as the serious spread of harmful pathogens like **MRSA** which

frequently moves around in buildings through the plumbing network.

Dyteqta support challenges with Drainage. Our Solutions include:

FLOW-TEQ® Automated blockage clearing and drain flushing.

HYDRA-TEQ® Bespoke drainage consulting focused on 'out-of-the-box' solutions.

BESPOKE TESTING: We have multiple clear pipe test rigs and a range of equipment to confidentially testing drainage-related products.

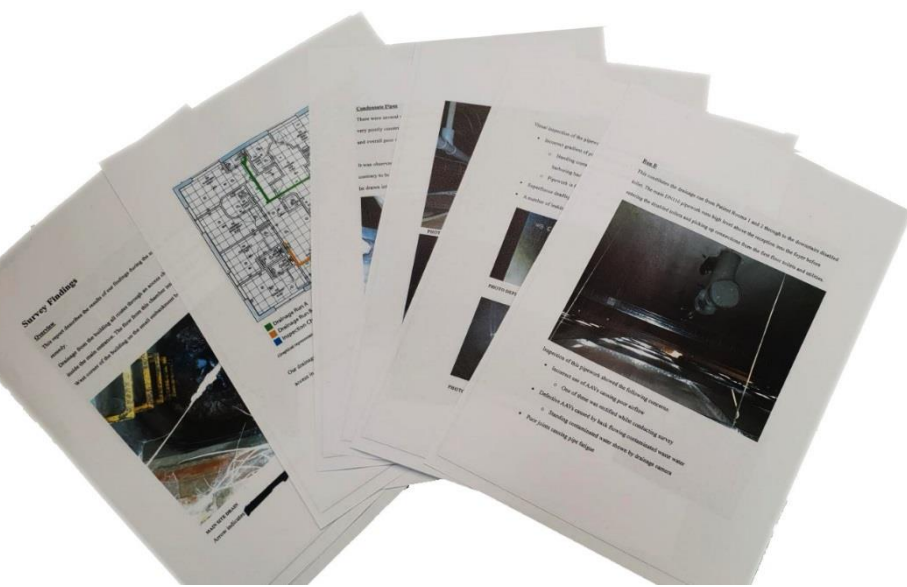
Buildings with a 'DUTY of CARE' should focus on drainage maintenance as part of their normal routine for the health and safety of everyone exposed.

HOSPITAL PROACTIVE SURVEYS

Dyteqta carry out detailed on-site hospital surveys, closely inspecting buildings with drainage problems to make a full assessment of current conditions. A confidential report is provided with recommended rectification priorities (if required) in order to reduce ongoing challenges.

Most sites with drainage problems call a drain clearing firm who will come out and fix the immediate blockage, but not address the root cause.

We will actually source the issue(s) and offer expert advice and proactive solutions to prevent similar problems occurring in the future. Let us come in and offer some guidance to alleviate these challenges. Our engineers are focused solely on drainage and clever 'out of the box' solutions, sometimes tailor made, to rectify and reduce challenges.



All site surveys include a detailed report with recommendations and photographs and a traffic light system of urgency for recommended repairs.

BESPOKE TESTING

Dyteqta provide confidential testing of drainage related products on our modular, multi-diameter clear pipe test rigs. We have in-drain cameras, sensors, macerators, pumps, and manufacture various in-pipe conditions to mimic drainline experiences to test a variety of products and materials.

If your company wonders:

‘Are our wipes really biodegradable...’

or

‘Is my equipment able to claim what we think it can claim...’

we will be able to test and help you validate your products.



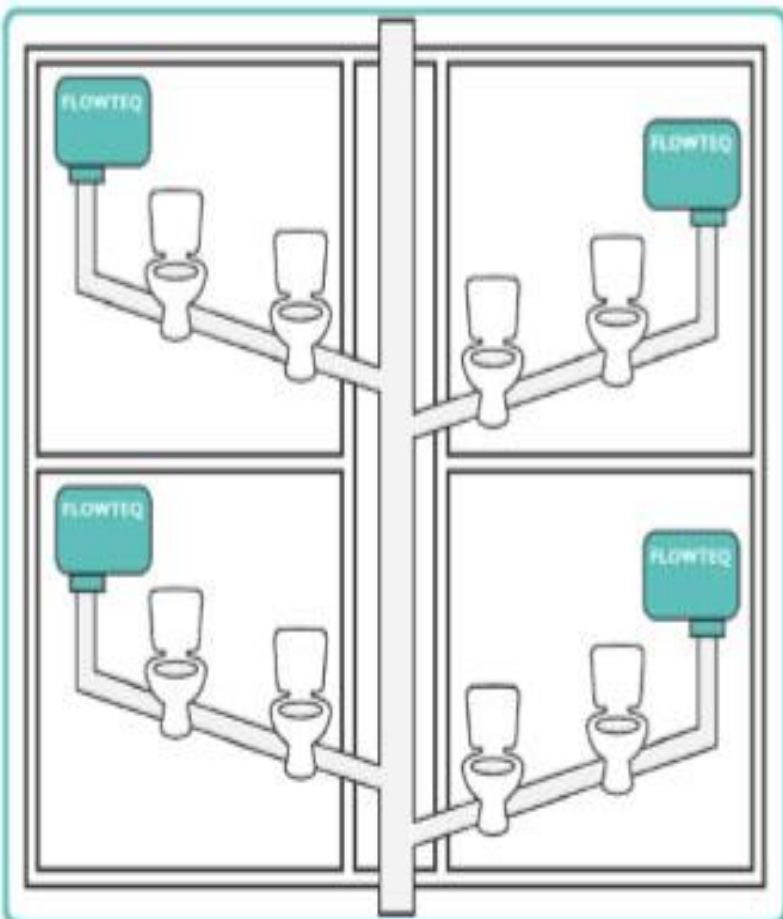
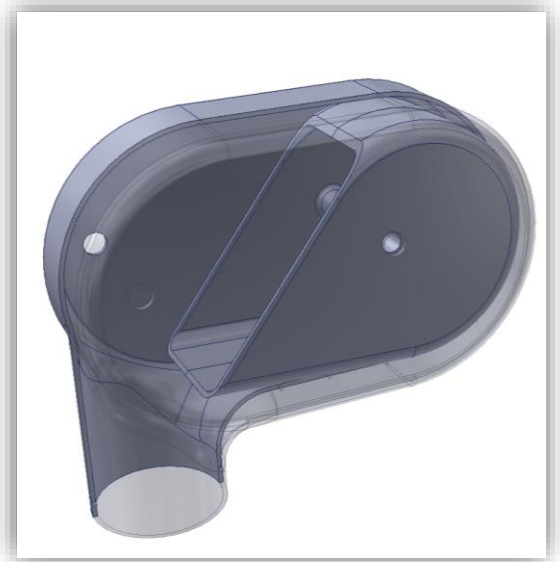
All of our tests are bespoke and completely confidential. We can present them in digital feeds, written reports, and board presentations. Whatever your requirements, we are happy to work with you to deliver the detail you require. **Contact us today to discuss how our test facilities could help your business.**

FLOW-TEQ™

FLOW-TEQ is a wall-cavity or wall mounted unit that connects into a cold-water line or grey-water feed. The unit fills up and tips a gush of water into the line as required to provide a 'whoosh!' pressure of water through the drainline for additional clearance support.

Flow-teq is recommended for installations at the highest point of branch lines that suffer from drainage challenges including backed-up sewage, slow drainage and sewer smells.

The low volume, high impact of water is exactly what challenged drain lines require to reduce the challenges experienced by poor drainage.



The purpose of the Flow-TEQ unit is to help reduce costs for hospitals, and reduce the spread of pathogens by keeping drains clear of debris and blockages.

The product has been designed to be simple, cost effective and easy to install. Once installed it should be maintenance free.

Dyteqta has a clear focus on helping to reduce the spread of harmful pathogens. Our solutions **can help to prevent** potentially **fatal cross contamination** and infection spread in hospitals.



We're not just about blockages. We're focused on healthy drainage. **With Dyteqta solutions, you can change 'REACTIVE to 'PROACTIVE.'**

Contact us today. We'd be happy to help.

+44 1273 746 229 **www.DYTEQTA.com**

The inspiration for DYTEQTA was borne from the devastating 2003 SARS outbreak in Hong Kong, which resulted in a staggering 321 infected cases and 42 deaths at the Amoy Gardens estate alone. The WHO report into the outbreak confirmed that SARS had spread through the drainage system as a result of depleted floor traps. Poor plumbing and poor maintenance were identified as a contributory factor in many of the Amoy Garden fatalities.



48 Nicholsons Wharf | Wellington Road | Portslade, Brighton | BN41 1DT



T: +44 1273 746 229 W: www.DYTEQTA.com E: info@dyteqta.com

UK BASED—WORLD SERVED